

MARCH 2018

SOUTHLAND LAND ROVER CLUB

INCORPORATED



www.southlandlandroverclub.co.nz

SOUTHLAND LAND ROVER CLUB INC.

www.southlandlandroverclub.co.nz
SLRC Cell Phone Number: 204-077-0915

OFFICE BEARERS

President	Kenn Hawkes	03-230-4143	027-407-5491 president@southlandlandroverclub.co.nz
Vice President	Grant Noble andreanoble@xtra.co.nz	03-218-6995	027-420-5821
Secretary	Andrea Noble	03-218-6995	027-425-4766 info@southlandlandroverclub.co.nz
Treasurer	Campbell Hay	03-230-4678	021-949-579 campbellh@xtra.co.nz
Safety Officer	Ron McLeod	03-217-6727	027-635-6193 r.m.mcleod@xtra.co.nz
Membership	Alistair Mitchell	03-230-4934	027-774-9286 membership@southlandlandroverclub.co.nz
Editor	Eileen Harrison	03-216-6620	027-216-6620 editor@southlandlandroverclub.co.nz
Webmaster	Arthur Steinhauser	03 777 9027	021-125-2007 info@videocopter.co.nz
Groundsman	Grant Noble	See above	
Sheriff	Chosen on the day		

COMMITTEE:	Andy Underhay	027-505-3502	
	David Harrison	03 216-6620	027-216-6619
	David Saunders	021-136-6252	
	Glenn Scott	03 212-8499	
	James Barrie	03 236-4082	027-435-9519
	Levi Goodall	027-722-3717	
	Stephen Parry	027-305-6630	
	Travis Colligan	027-842-3637	

Life Members: **Jeff and Sue Anderson**
David and Eileen Harrison

Cover Page: Impressive sky and tussock scene on the Bridge Huts Road Track
Photo courtesy of David Harrison

Disclaimer:

The views expressed in this newsletter are those of the contributors and do not necessarily reflect the views or policies of The Southland Land Rover Club.



President's Report

Hello Everyone,

Firstly, I've had an email from the NZFWDA (New Zealand Four Wheel Drive Association) regarding their AGM and conference which is being held in Invercargill in May. Prior to the conference, they are running a Top of the Island to the Bottom of the Island 4WD trip which looks like a fantastic trip. More info. on this later in the magazine.

NZFWDA Conference and AGM

The 2018 NZFWDA Conference and AGM is to be held in Invercargill – Saturday 19th and Sunday 20th May 2018. A Registration pack will be sent out by 31st March 2018. Confirmed remits will be sent to Club Secretaries at the same time.

An invitation to join the President's Run - 4wding from the Top of the South to the Bottom of the South - will be sent to every Club Member shortly.

The email also mentions a survey the DoC are conducting in relation to their future plans for Molesworth Station. I'm sure you all know about Molesworth, it is a large high country station that is run as a working farm by DoC. They are asking for public input regarding the future use of this land, whether it be kept as a farm property, made into a park of some sort, or other options. I have my own opinions regarding management of Molesworth, but I'll keep them to myself! I encourage you to look at the survey and give an opinion.

Molesworth Station

The Department of Conservation (DOC) is open to a radical rethink of the historic Molesworth Station, the rolling high-country farm linking Marlborough to North Canterbury. The survey closes on March 31. For further information and to take part in the survey visit <https://www.surveymonkey.com/r/Molesworthconsultation>. [I had more success finding this site by just Googling survey monkey Molesworth - SLRC Ed.]

Now, onto other things. I have been contacted by Total Rope Worx, a company that specialises in (oddly enough,) rope. They are able to supply synthetic winch ropes in various sizes and fibre types, sold either by the metre, by the roll or with an eye spliced in the end with the hook fitted. They also make soft shackles which are a shackle made of rope, so are not heavy and won't fly the way a normal shackle will if a strap breaks. There are a few special prices that they are offering printed later in the magazine, but I'm sure they will be able to supply anything you may need.

That's all the news for the month from me. See you out there.

Kenn Hawkes

March 2018

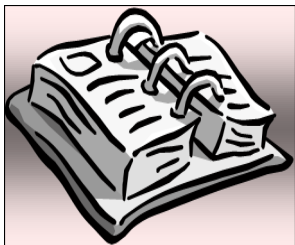
SOUTHLAND LAND ROVER CLUB INC.

By-Laws and Convoy Rules

(A Check List for Trip Leaders and Members)

1. **Trip Leader is empowered and responsible for the days activities.**
2. **No dogs** are permitted on any Club outings.
3. **No firearms** are permitted on any Club outings.
4. **No alcohol** shall be consumed during a trip, only when the trip is officially finished for the day. The Trip Leader shall determine the beginning and the end of the run.
5. The following **gate closing procedure** shall be observed on all Club outings:
 - (a) The first vehicle shall be *Trip Leader*.
 - (b) The last vehicle shall be *Tail End Charlie*.
 - (c) The vehicles in between shall be *the convoy*.

The vehicle immediately behind the Trip Leader is responsible for closing the first gate by waiting until Tail End Charlie passes through. He then rejoins the convoy in front of Tail End Charlie. The new vehicle immediately behind the Trip Leader is then responsible for closing the next gate and falls in line in front of Tail End Charlie, etc. etc. Consequently the members of the convoy (except Trip Leader and Tail End Charlie) take turns at closing the gates.
6. **If you want the vehicle in front of you to stop**, put on your headlights.
7. **All litter** must be properly disposed of at all times, preferably take it home with you.
8. **Always keep the vehicle immediately behind you in sight. Should you lose sight of them STOP** until they can be seen again or catch up. This keeps the convoy together and ensures that it doesn't get too spread out. **If the vehicle behind you gets stuck** we ask that you back up and help where possible.
9. **Tow balls MUST be removed** for all runs.



UPCOMING TRIPS and EVENTS (Mark the Calendar)

TRIP GRADES

GRADE:

**ESPECIALLY (though not exclusively)
SUITABLE FOR:**

EASY (Shiny)

- (Novice Drivers):

- Easy 4x4 driving, on little/no rough terrain, shallow water
No damage or scratches likely.
Road or all terrain tyres sufficient. Snorkels unnecessary

EASY to MEDIUM - (Novice to Intermediate Drivers):

- Rougher off-road tracks, some mud, bumper deep (or higher) water, some ruts. Possible scratching.
All terrain or mud tyres and snorkels strongly recommended.

MEDIUM

- (Intermediate Drivers):

- Harder terrain, more mud, wheel height water.
Scratches and other damage possible.
Mud tyres and snorkels strongly recommended.

MEDIUM to TOUGH

- (Intermediate to Experienced Drivers):

- Rough, muddy, steep, rutty and/or boggy terrain, wheel depth plus water.
Scratches and other damage a real possibility.
Mud tyres, snorkels and full recovery gear essential.

TOUGH

- (Experienced Drivers):

- Hard technical terrain, bush bashing, rough, steep, boggy, swampy, rutty terrain, deep water.
Scratches, body and other damage highly possible.
Mud tyres, snorkels and full recovery gear essential.
For well equipped vehicles only.

- The above is a guide only and will vary from trip to trip.
- We have no control over the weather, so come well prepared as a trip can all too easily move up the scale a notch or two if it turns nasty.
- If you are still not sure, please check with the trip leader before heading off on a run.

TRIP LEADERS, PLEASE REMEMBER. . .



The SLRC First Aid Kit **MUST** be taken with you on **ALL** runs, then passed on to the next trip leader as soon as possible after your run is finished. If there are any queries with it, please phone Kenn Hawkes - 03-230-4143.

Day and Date : Saturday, 10 March
 Where : **MULHOLLAND TRACK and TENNANT PEAK**
 Trip Leader and Phone : Gorden Goodall 021-022-35694
 Grade : Easy-Medium
 Equipment : Everything on the back page of this magazine.
 Meeting Place and Time: Five Rivers Cafe 8.30am
 Registration Details : Yes to Gorden please no late than Wednesday, 7 March

Day and Date : Sunday, 11 March
 Where : **CLUB GROUNDS**
 Grade : Easy to Medium
 Description : Practice your skills and/or help out with a bit of ground maintenance as the need requires.
 Contact and Phone No. : Grant Noble (03) 218-6995 or 027-420-5821
 Meeting Place and Time: Club Grounds 10.00am to 2.00pm
 Equipment : Everything on the back page of this magazine
 Registration : No. Just turn up



SLRC's MONTHLY COMMITTEE MEETING

When : 8.00pm Tuesday, 13 March
Where : Ruru School staffroom
Located: at the rear of the school, access is via the driveway past the old peoples' home at the end of Ruru Street)
(all members and prospective members welcome)

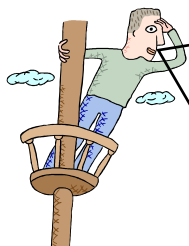
Day and Date : Friday, 23, Saturday, 24, Sunday, 25 March
 What : **INTERCLUB WEEKEND with NO4WD Club and Central Otago 4WD Club**
 Hosts this Year : North Otago 4WD Club
 Where : Oamaru Area
 Grade : Easy-Medium and very social
 Accommodation : - Oamaru Top 10 Holiday Park,) Choice of
 : 30 Chelmer Street, Oamaru)- options, arrange
 : Phone (03) 434-7666) own bookings
 : - See internet for a choice of other options

.../ Interclub weekend continued from previous page

Itinerary : **Friday** : **Travel to Oamaru** and settle into accommodation
: **Meet and Greet** 6.30pm onwards at Oamaru Club, Severn Street, Oamaru (walking distance from Camp).
: Meals and a bar available.
: **Saturday** : **Run**. Off road loop top of Kakanui led by Keith Barclay 03-434-8530
: **Night**: Catered evening meal at Maheno Tavern.
: Numbers to Les Weir 03-434-2367
: **Meal Cost**: No more than \$30 per adult
: **Sunday** : **Run**: Off road loop Horsehoof Range led by Ron Pringle 03-434-7537
Contact and Phone for : Ian Vercoe: Landline : 03-455-7296; or
More info/Trip Registration : Cellphone: 021-170-8030

Day and Date : **Sunday, 25 March**
What : **DRIVE A DREAM (Rotary Club Charity Event)**
What is it About? : People buy tickets to have the experience of being able to drive/be driven in vehicles they never have before. The proceeds are then donated to a very worthy charity.
What is Required : Drivers willing to give ticket holders a taste of the off-road experience by driving them around SLRC's Training Grounds.
If you can help contact : a very grateful Grant Noble 03-218-6995; or
Need more info. : 027-420-5821 asap please

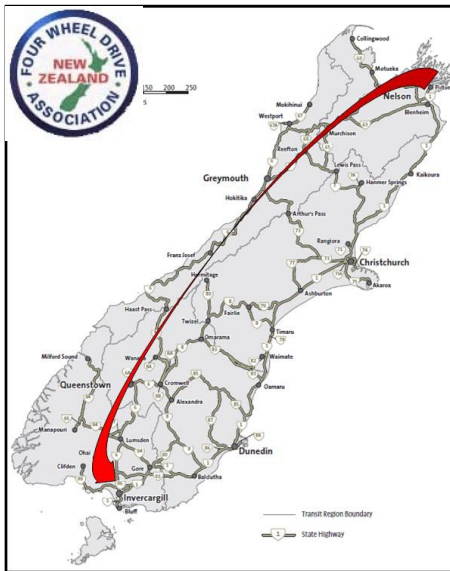
Day and Date : **Saturday, 14 April**
Where : **UPPER MATAURA and ROBERTS CREEK**
Grade : Easy-Medium There will be river crossings
Equipment : Everything on the back page of this magazine.
Meeting Place and Time: 9.00am Fairlight
Trip Leader and Phone : Steve Parry 027-305-6630
Registration Details : Yes to Steve no later than Wednesday, 11 April



ON THE HORIZON

NEW ZEALAND FOUR WHEEL DRIVE ASSOCIATION **Eight days of Activities/Conference and AGM** **Saturday, 12 May to Sunday 20 May**

As SLRC is now a member of this Association we can be involved in these activities. (See the next few pages for more information). If you have any questions or require more information, please phone SLRC President Kenn Hawkes 03-230-4143 or 027-407-5491.



The President's Run

Saturday 12 May to Friday 18 May

This trip is sponsored by Neville Dunton, the NZ4WD Association President, and organized by John McDonald, Southern Zone PRO.

John has planned this trip as an adventure down the scenic east coast of the South Island, keeping in mind that you will have a long drive so the tracks aren't truck wreckers but there will be some challenges on the way.

John advises you not to bring your most precious shiny truck, as it may come back with a few mementoes of the trip but nothing serious.

John has done some of the tracks but not all of them, and most of them will have changed since he was last there, so he can't guarantee the condition.

Please bring a well-prepared vehicle with all

your own recovery equipment.

John is still working on food & accommodation, so the details are very shaky at the moment. Perhaps if you budget for between \$1500 & \$2500 for the trip (Picton to Invercargill) then that should cover it.

If you have any questions or need information regarding booking for this run, which is on a first in first served basis, you can give John a call on 03 308 0443 or 021 464 639 or email him at john.mcdonald@xtra.co.nz

Basic Tentative Itinerary

Saturday 12th May

- Drivers Briefing at Picton.
- Then there will be a leisurely drive around Queen Charlotte Drive, ending up at Pelorus Bridge for lunch.
- From there we will head over the Maungatapu track to Nelson.
- From Nelson we drive down to St Arnaud, hopefully not getting lost on the back-country roads.

Sunday 13th May

- We have a trip up to Beeby's Knob behind St Arnaud in the morning.
- Then down the Rainbow Rd to Hanmer Springs, where you can soak off the day's travel in the hot pools.

Monday 14th May

- Heading south again we head down to the Huruni Hotel for smoko.
- After smoko we head down Lees Valley to Oxford.
- Then up Porters Pass to Lake Lyndon and down the Lake Lyndon road to Lake



Tuesday 15th May

- This is where we are going to test your river skills. We have three trips for you to choose from:
 - The Harper River. This is a rough river track culminating in a short walk to the Hamilton Hut.
 - The Avoca River. This is another rough river track, passing the Basins Hut, the Old Basins hut and continuing as far up the Avoca as time will allow.
 - And then there is the mighty Wilberforce. This has everything in it. Good tracks, rough river track and no tracks. Plus of course you have the Wilberforce deep swift and very dangerous. We should get to Fanghill Hut no problem but Urquharts hut will be the ultimate goal often tried but seldom achieved.
- Any 4x4 with 31" tyres can do these tracks, the only warning is that the shiniest of trucks just could get a wee bit tarnished.
- All these are return trips so if you have any teeth left you won't by the time you get home.
- This is the only place where you will spend two nights in the same place.

Wednesday 16th May

- This is where a good navigator will be essential, we are going to have a car trial across the Canterbury Plains.
- This is John's home and he has been extremely sneaky, there are lots of roads to use so he will be very disappointed if at least some of you don't get lost.
- Don't panic we are ending up at Black Forest Station on the shores of Lake Benmore and an easy 2 hour run from where you started.

Thursday 17th May

- We will be heading over the Black Forest Rd to Benmore Power Station with spectacular views of the lake far below.
- We will then drop down to Duntroon where we head inland to the Danseys Pass stopping off at the Danseys Pass Coach Inn for a quick lemonade.

Friday 18th May

- This will be a big day with lots of driving but the tracks should be ok and we should be able to keep a good speed up.
- First we will head up the Old Dunston Rd to Alexandra.
- Then we will head up to Clyde and over the Hawksburn road to the Nevis Crossing.
- From there we will take the Nevis Road to Garston.
- Pumping up our tires we point the trucks south and head for Invercargill and the end of the trip.



Conference Activities

Saturday, 19 May

Building on the success of the new approach to the conference over the last couple of years, we're doing the same again this year.

Visits to two of the most fascinating petrol-head museums in the world:

- Transport World
<https://www.transportworld.co.nz>
- Classic Motorcycle Mecca
<https://www.transportworld.co.nz/motorcycle-mecca/>

Plus, there will be some other interesting places to visit, planning is in progress.

All this will be followed by the Association dinner. And guess what, it'll be the oyster season if we're lucky!

We'll provide buses between the venues. Full details will be published in the AGM pack

AGM, followed by possible afternoon trip

Sunday, 20 May

The AGM will start at 9.00am, at the Ascot Park Hotel. You will need to register for this.

For those of you with time on your hands after the AGM and lunch ends at

about 1.00pm, depending on numbers, we may be able to arrange some seats for a run out to Oreti Beach, made famous by the World's Fastest Indian.

This also depends on whether we can get enough transport for everyone, maybe one of those WW2 troop transports can be hired?

Again, details to be finalised.

Conference and AGM

The 2018 Conference and AGM Information Packs will be e-mailed out by 30 March to all Association members as well as Club Presidents, Secretaries and Delegates named on the NZFWDA Database



It will include official notice of the AGM, registration forms, delegate votes, AGM agenda items, minutes from the last AGM and NZFWDA Life Membership nominations.

For more information contact:

Conference: Russell Quin on rp.quin@xtra.co.nz or phone 027 222 4879

AGM : Bobbie Kincaid on secretarynzfwda@gmail.com or phone 027 414 2596

Oreti Beach on Sunday

Bookings will be in the AGM pack



CLUB PROPERTY FOR HIRE:

Tyre Chains	Per weekend	\$15.00
Winch Tirfor	} 1 or all 3 per weekend (You must have your own shackle)					
Snatch Block						
Ground Anchor		\$30.00
Contact Ron McLeod	(03) 217-6727		

FOR SALE:

Spark Arresters	\$20.00
Contact Andy Underhay	027-505-3502			

Tyre Chains

- 31 x 10.5 x 15	POA
- 33 x 12.5 x 15	POA

Contact Alistair Mitchell (03) 230-4934



Key Ring Torches (give off excellent light) (while stocks last)	\$ 5.00
Contact Ron McLeod	(03) 217-6727			



Polarfleece Beanie Hats

Monogrammed with SLRC logo	\$10.00
Contact Andrea Noble ..	(03) 218-6995		

SLRC logo monogrammed on clothing

(ie. polo shirts, jackets, t-shirts, vests etc.) ..	POA
Contact Labelz Monogramming (03) 217-8585	POA

THOUGHT FOR THE MONTH
Knowledge talks. Wisdom listens



4 X 4 CLUBS WINCHLINE PRICES

Winchlines Rope only.

Price/splicing and Steel Thimble are extra:

12mm Dynalene Winchline (MBL 12,300kg) = \$15.00 per meter

11mm Dynalene Winchline (MBL 10,800kg) = \$13.00 per meter

10mm Dynalene Winchline (MBL 8,770kg) = \$11.31 per meter

Made up Winchline lengths are at a one off sale price.

Limited stock available

- 10mm X 30mtrs Dynalene Winchline (MBL 8,770kg) = \$320.00 each with Steel thimble and 2m/t Hook.
- 10mm x 26mtrs Dynalene Winchline (MBL 8,770kg) = \$300.00 each with Steel Thimble.
- 9.5mm X 26mtrs Dynalene Winchline (MBL 7,740kg) = \$270.00 each with Steel Thimble.
- 11mm X 26mtrs Dynalene Winchline (MBL 10,800kg) = \$333.50 each with Steel Thimble.

Soft Shackles:

- 10mm Dynalene Soft Shackle (MBL 8,766kg) = \$38.00 each
- 11mm Dynalene Soft Shackle (MBL 10,773kg) = \$41.00 each
- 12mm Dynalene Soft Shackle (MBL 12,321kg) = \$45.00 each

Snatch Rope:

- 24mm x 8mtr 8 Strand Nylon Snatch Rope = \$130.00 each (MBL 6,466kg)
- Snatch Rope Bag = \$35.00 each

Contact Steve Middleton:

Mobile Phone : 0277696179

Home Phone : 075744220

Email: ropeworxnz@xtra.co.nz

Web : www.ropesupplies.nz



SAFETY REPORT BY 'THE SEAGULL'

The pizza oven is operational, about 20 cooked so far!! Maybe now the Landcruiser can get a touch up and a warrant!!

OPTIONAL GEAR

Pick/Grubber

These can be two handy implements for track maintenance. A spade or shovel is great in dirt, swamp, or sand but fails a bit when the going gets tough. This is where the pick comes in useful to loosen the gravel, ice, sandstone or hard clay.

FROM THE COMMITTEE

As SLRC is now a member club of the New Zealand Four Wheel Drive Association (NZFWDA), ultimately it includes us all to become more informed, so please acquaint yourselves with the activities it has coming up in May and if possible get involved, as and where you can.

LESSONS FROM PAST TRIPS

A recently held trip contained the surprise that what had in the past been recognised as a public road (through some private property) that would still be open to us, was actually padlocked. Evidently we cannot take these things for granted any more and must be factored into the reccie process.

TIP FOR THE MONTH

If you are bringing a prospective member along with you on a run it is your responsibility to ensure that they are aware of the Club's rules. Looking after them well and introducing them to others will help with their decision to join or not.

Have fun and stay safe!!

Ron McLeod,

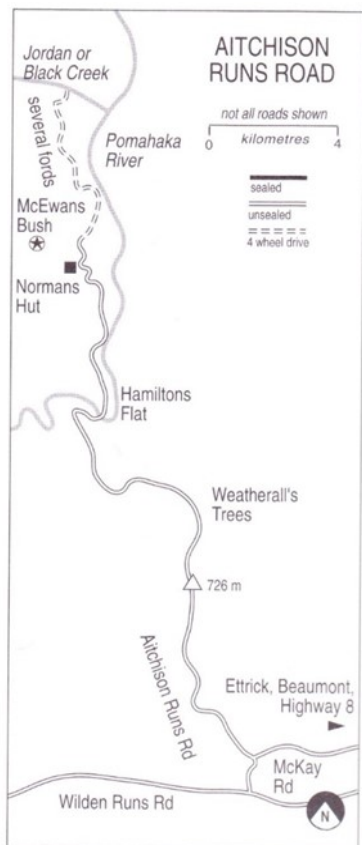
Safety Officer



TRIP AND EVENT REPORTS



CAMPING WEEKEND RUNS) Cancelled by land owner due to really
NOKOMAI to NEVIS and)- bad weather. To be re-run at a later
TENNANT PEAK to NEVIS) date.



AITCHISON RUNS ROAD TO BLACK CREEK

Sunday, 25 February

Trip Leader Glenn Scott

Trip Report by Eileen Harrison

Photos by David Harrison

Friday night before the run, Dave and I receive a phone call from a 'somewhat distressed' trip leader: "Heeeelllp!" he wails into the mouthpiece. "The Toymota Surf isn't going to be repaired in time! I've just discovered my steering wheel is in very real danger of falling off! ('possible' slight exaggeration on my part, but it makes for a better story - it did have a steering issue.) Have you guys got room in your Safari for me? If not, the trip will have to be postponed for a while." Faced with a day at home instead of a day off-roading, 'panic' sets in. Unhesitatingly our answer goes somewhat loosely along the lines of "Of course Glenn, but we'd simply love to have you grace us with your presence. And as you're just a tad bit taller than Eileen (most people are), of course she doesn't mind giving up her front seat and cramping herself into the back one, so you can have more room for your legs." Happily then, the deal is done and at 8.30am, Sunday, 25 February, up he bounces at our place - bright eyed, bushy tailed and eager for the off. So, off

into a blustery grey yonder in search of better weather, we head.

The meeting place is Millers Flat and we estimate a two hour trip from Invercargill to get there. Howeeeeeever, when a caffeine deprived front seat passenger not only feels a need for coffee himself, but also 'bribes' Dave and I with the offer of coffees too, se are of course obliged to pull up in Gore, so

Glenn can stand in a longer than usual serving line at McDonald Cafe, waiting for our collective little habits to be satisfied. With time to make up, the elastic bands powering the Nissan are not tightened up enough. There's been far too much nattering amongst us in the cab, and Dave, somewhat distracted by the utter 'brilliance' of the topics covered, pulls the Safari into Millers Flat 10 minutes late. As we do so, the worried expression etched into the face of Neil Douglas', cell phone pressed firmly against his ear in an attempt to find out what has happened to us, visibly lifts. No one needs to get buried today!

Today our convoy consists of three vehicles (was to be six, seven if Glenn's truck had been running, but three had had to pull out for various unavoidable reasons). Spying a vacant front seat in John McCorkindale's Land Rover Discovery I 'abandon ship' in its favour. It's a long way up into that cab, but I'm determined to conduct the manoeuvre in as sprightly and dignified a manner as my ever aging body will now allow me. . . With a sweep of his hand, passenger seat contents land on the floor to make room for me and I settle in.

A quick trip briefing now behind us, we're off, heading for Ettrick and the Moa Flat road into them their hills towards the aim of today's run - Aitchison Runs Road. Conversation between us flows easily as we follow the gravel road track, all the while enjoying the wide open rolling scenery laid out before us, broken by frequent views of the Pomahaka River lazily snaking its way through the lowest reaches. There are a few gates along the way, which Glenn opens and Becky Douglas shuts once we are all through. As predicted, everything proceeds without incident until around 12.00 noon. Now, if you look at the Aitchison Runs map you will see a little kink in the road (presumed



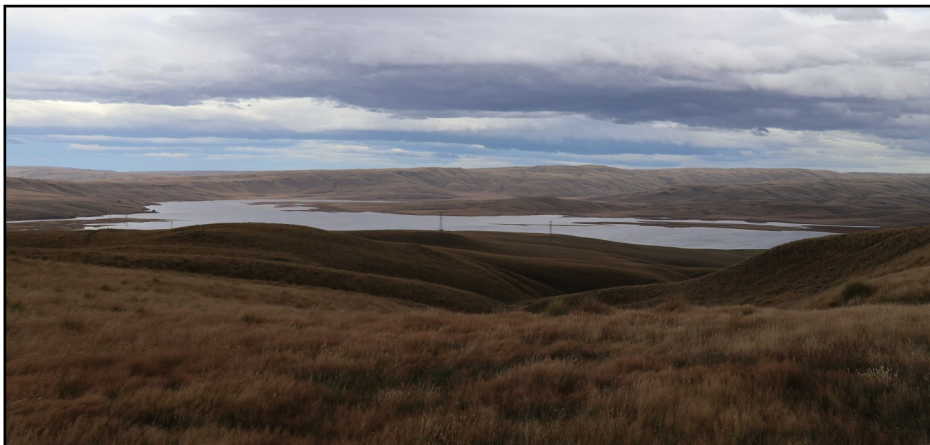
to be public) just before Norman's Hut. Here the gate was, surprise, surprise, padlocked. Turning around we retrace our

steps a bit and head up another road, (also presumed to be public) only to be greeted with yet another padlocked gate! There is nothing for it but to find ourselves a lunch spot beside the river and figure out what to do next.



As it was still early, Glenn suggests we head back to Millers Flat, cross the bridge there and take a run up to the Bridge Huts Road which is not far from Lake Onslow. Off we go then back to Millers Flat, which we reach around 2.00pm. At the Millers Flat bridge Neil and Becky decide the day is getting on and with around two hours drive home, they make the decision to pull the pin and head for home. We say goodbye to them and head off across the bridge. On the other side of the bridge, John who has visitors back at home also has second thoughts, so we say goodbye to him and continue on our now solitary way.

At 2.58pm we reach the Manorburn Conservation Area (see photo on front cover of this magazine) and I have to say, this is where the day really starts. Glenn opens the gate and we enter an undulating terrain of rolling tussock



land with views of Lake Onslow becoming ever larger, the closer we get. The track is not always smooth, it is cut up with deep ruts in places, while in other areas there are patches of water to be got through, but blessedly all have hard bottoms. Being on our own, we manoeuvre our way through the land more cautiously than we otherwise would, had the others still been with us to assist in extractions which blessedly on this occasion at least, there were none.

If memory serves me correctly the last time we did this track was 15 years ago and we agreed that it would be a good one for the Club to do again at some stage.

Arriving back at Millers Flat at approximately 4.30pm, it's on to Tapanui via the highway for ice-cream before striking a heavy rain storm on our way down to Gore. The rain finally peters out by the time we get to Kennington and we arrive back at Harrisons place around 6.30pm. A day off from the housework and gardening is always a welcome change from the usual routine. So, after spending a very pleasant day out in the backblocks countryside, Dave and I now exchange goodbyes with Glenn who then boards his own vehicle and heads for home in good old Bluff.



LOOKING BACK

ROLLER COASTER TRIP

Sunday, 2 October 2001

Report by John Hawkins

(Reprinted from pp 11-13 November 2001 Magazine)

First to arrive at the designated meeting place was Scott Gorrie in his recently acquired bright blue 3 lt rally Jeep which Scott had discovered in an old shed at Otatara - goes well.

This was followed shortly after by another Jeep with a bright yellow body and a black top looking not unlike a bumble bee. However, its proud owner Wayne Couchman assured me it had more sting than a bumble bee with its state-of-the-art C.D.I. ignition and raised suspension. It certainly looked the part.

Over the next 15 minutes, some 30 odd 4WDs assembled including a prospective new member on road tyres with no vehicle tow hooks. Club Safety Officer Keith Gutsell solved the problem by producing a tow hook and 'D' shackle for the visiting vehicle.

After a quick welcome and briefing we set off looking not unlike a military convoy - a cross between 'Dad's Army' and 'Rambo' to most onlookers.

The 'Roller Coaster' play area is a track I have been working on for the past three years, and as its name suggests, is a series of house size ups and downs over a two mile (3½ km) circuit with the odd bog hole.

It's meant to be a day for new members and shiny wagons. But the older members seem to have just as much fun as the track becomes more challenging.

Judging by the screams and laughter from the family wagons, everyone seemed to be enjoying themselves. There are by-passes on the tougher sections for new members if they don't feel up to the challenge - but most seem determined. With the odd tow required here and there it took two hours for the 30 odd 4WDs to complete the course, by which time we were ready for afternoon tea.

This gave the children a chance to play in the sun and stretch their legs while the older boys took the opportunity to compare tyres and vehicles etc. before the real challenge began.

The objective was to cross the wet area, then climb a steep pea gravel bank. This was a challenge best suited to vehicles with a high power to weight ratio, which kept everyone entertained as drivers worked out the best gear and revs combo to climb the steep power sapping pea gravel walls.

The winner? Well, it was the guy with the biggest smile.

Special thanks to Scott Gorrie, Keith Gutsell, Wayne Couchman and their many helpers who filled in the area of exposed pea gravel with a few trailer loads of sand. This will certainly help the grass regenerate in areas opened up by wheel traffic.

Meantime the gate is locked, so I look forward to seeing you all at next year's 'Roller Coaster' event.

PS Special thanks to David Miller for offering his services as Midwife, which fortunately was not required.

March 2018



EDITOR'S CORNER

Hello everyone,

Apologies to those wee few people who received a pretty much black and white copy of last months magazine. The printer threw a spanner in the works mid-print when it told me it required an image drum to be fitted. As I had no prior warning image drums were about to need replacing, of course I didn't have any on hand and

without them, printing grinds to a complete halt. Fortunately I also have a backup monochrome laser printer of my own, so printing was able to be completed on this. A full set of image drums, (one for each of the four colours) which need replacing every year-and-a-half or so, have now been ordered, received and fitted. While I was shopping around for these on the internet I also happened across some toner cartridges for what I believe to be an extremely reasonable price. Hopefully they will perform equally as favourably as I have now purchased on behalf of the club, some of them too.

Happy 4x4ing. We hope to see you out on the trail with us somewhere soon.

Eileen Harrison

RETURNING MEMBERS

Committee and members warmly welcome

CHUCK and TABITHA LUECKER

back to the Southland Land Rover Club

Trip reports, photos or anything else you wish to contribute to next months magazine should be received **by the absolute deadline of SUNDAY, 18 March** either by:

- Posting to 22 Cushen Street, Invercargill 9812; or
- E-mailing to editor@southlandlandroverclub.co.nz

(The Editor reserves the right to use discretion to edit trip reports and to withhold names of properties and landowners to protect their privacy)

Essential Gear List and Things to Do

If you haven't got it, you shouldn't be on club trips!

- ▶▶ **Remove towball**
- ▶▶ **Tow hooks / Clevis (on front and rear)**
- ▶▶ **Recovery strop / joining stick**
- ▶▶ **Rated 'D' or bow shackle**
- ▶▶ **Shovel / spade**
- ▶▶ **Basic tool kit / vehicle spares**
- ▶▶ **Spark Arrester**
- ▶▶ **Fire Extinguisher**
- ▶▶ **Jack and jack base of wood or steel**
- ▶▶ **Radiator blind / sack**
- ▶▶ **Torch**
- ▶▶ **Strong footwear**
- ▶▶ **Soap / towel / toilet paper**
- ▶▶ **Water in a container**
- ▶▶ **First Aid Kit**
- ▶▶ **Valid drivers licence**
- ▶▶ **Third Party Insurance (minimum required)**
- ▶▶ **Current Registration and Warrant of Fitness**
- ▶▶ **Self-sufficient overnight equipment: Tent, bedding etc. when required.**
- ▶▶ **No dogs or firearms**
- ▶▶ **For further information on any trip, contact trip leader**

*** Please make sure that any guests you bring are equipped with the required safety gear and abide by the Club rules. ***